

Students aged 16-17 years old

Welcome to Westbourne Academy Bournemouth 😊

We hope that you will have a safe and enjoyable time here with us.

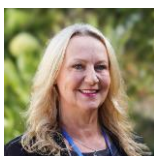
Meet our Welfare/Safeguarding Team:



Designated Safeguarding Lead (DSL)
Mark Halls
Principal



Deputy Designated Safeguarding Lead (DSL)
Vanessa Elphick
Head of Accommodation



Safeguarding Officer
Emma-Jayne Lochhead
Head of Administration



Safeguarding Officer
Mr G. Garfield
Academic Administrator



Safeguarding Officer
Louise Ingham
Director of Studies

Your Accommodation

We hope that you will be very happy in your accommodation during your stay. Please make sure you have your homestay provider's contact number saved in your phone. Your homestay provider will give you a map with information on your journey between home and school. If you have any problems or concerns, please speak to our accommodation team at Reception. Vanessa, our Accommodation Officer, will be happy to help you.

Lunch

We have a lovely canteen in Westbourne Academy where you can buy hot or cold food and drinks. The average cost for lunch and a drink is £6 payable by cash or card. Please make sure you bring enough money with you to buy food or you may also bring your own food to school and eat in the cafeteria.

Remember that a snack lunch is included as part of your accommodation at weekends, so make sure that you let your homestay know your plans for the weekend.

Transport

Using public transport

- We advise you to download the MORE BUS App onto your phone.
- Zone A is the recommended ticket
- Put your hand out as the bus is approaching the stop.
- This tells the bus driver you want to get on.
- Don't wait at bus stops alone. Arrange for someone to meet you at the bus stop.
- Check the time of the last train or bus home so that you don't miss it at the end of the evening. Remember that these times may be different on Saturdays, Sundays and Bank Holidays. You can download the more bus app and purchase a bus pass. Ask reception for details.
- Store your luggage on the train as close to your seat as possible
- Take a taxi with a friend rather than walk the streets using your smartphone's satellite navigation system. Taxis in the UK are usually paid in cash. We recommend using the following company: Ariel Taxis +441202 747333

Getting Lost

If you are not sure how to get somewhere, ask our reception staff or your homestay providers for help. For Westbourne Academy activities, the staff will give you a map showing the location. You can also call the emergency telephone number for help.

Safety on the Streets

- Always stay alert on the streets as you would in your own country. Try to use only routes which are well lit and busy. It is important to remember that in the UK, we drive on the left-hand side of the road. Remember this when crossing roads and always use a pedestrian crossing where possible.
- If you plan to cycle, please use cycle lanes where possible. It is important to always wear a helmet.
- If you are travelling at night, walk in a group or use public transport or a taxi. Don't take shortcuts through dark alleyways or parks. Make sure your phone has power and credit so that you can call a taxi if you need one.
- Don't carry large amounts of cash with you when you are out.
- Remember to always keep your bag or coat with you. Do not leave your items unattended.

Laws

In the UK it is illegal for anyone under 18 to buy tobacco. Smoking is illegal in enclosed public spaces.

It is illegal for anyone under the age of 18 to buy alcohol or to have alcohol bought for them.

It is illegal to carry any sort of weapon including knives, self-defense CS gas sprays or guns.

Alcohol consumption whilst on a course is against Westbourne Academy rules and can result in being sent home.

It's illegal to have drugs or own drugs, to supply anyone with drugs, to make drugs, to import or export drugs.

Drug use whilst on a course is against Westbourne Academy rules and can result in being sent home.

Social Time

Westbourne Academy Social Programme

Westbourne Academy have a social programme for activities and excursions during the evenings and weekends. You will find more information on this in the cafeteria and at Reception.

A member of staff will come around the classrooms to inform you of activities at the beginning of the week.

During some of our weekend excursions, you will have your own free time. It is important that you are always with at least two other students. Do not walk off on your own. The teacher will give you instructions and a map.

We recommend joining our programme as much as possible as they're fun and they will give you a great opportunity to practice your English with others. Sometimes, we organise excursions with local travel companies. If you wish to join one, we will need written consent from a Parent/Guardian before we can add your name to the list. Please speak to us at Reception if you would like more information.

You are not allowed to travel independently outside of the local area.

Curfew Time

Please return home every night by the time below.

Under 18 students have a curfew time of 22.30 Sunday to Thursday and 23.30 Friday and Saturday.

Free Time

- Make sure you stay with friends when travelling in and around Bournemouth. It is important to make sure that your mobile phone is charged at ALL TIMES so that you can be contacted if needed.
- Make sure that you give yourself enough time to return home for dinner with your homestay provider.
- Always travel with a friend from Westbourne Academy. We have placed you in a homestay provider with another student so you always have someone to travel with.
- Avoid Bournemouth Gardens, parks, the Pier Approach and the beach when out past 9PM
- You must be home before curfew time every day. If there is an emergency and you are going to be late, you must call your homestay immediately.

Things to do in Westbourne Academy

The school and its facilities are open Monday to Friday from 8:45am to 5.00pm.

At Westbourne Academy, we have lots of board games that you can play in our cafeteria with friends. Please ask at reception if you would like to play one!

Study materials are available at Reception.

Westbourne Academy has two laptops available for students to use on the premises. Please see Reception if you would like to borrow one.

WIFI

We have WIFI access throughout the school, which is free to all our students.

You can find the WIFI QR code around the school or please scan here

Network: **WBA-Students**

Password: **wbastudents**



Wristbands

On your first day, you will be given a yellow wrist band for you to wear during your whole stay. Daily classroom checks will happen to make sure you are wearing the wristband so please remember to wear it AT ALL TIMES. Our 24-hour emergency telephone number is on this wristband. If you lose your wristband or are seen not wearing it in the school, you will be charged 50p to go towards our chosen charity. Please do not swap your wristband with any other student.

Contact us

Make sure that you have saved our 24-hour 7 days a week Westbourne Academy Emergency number on your mobile phone.

(0044) 79 74 34 84 53

If you change your mobile number during your course, please tell the school and your homestay provider immediately.

You must be at school on time every day for your class. However, if you think you are going to be late, you **MUST** call us.

If you are sick during your stay, you **MUST** call us immediately. If you want to, your homestay provider can telephone for you. If you do not come to school and we do not know why, we will contact both you and your homestay provider shortly after your class begins.

Further Help & Support

If you have any problems during your stay, there will always be a member of staff available to speak to you. Remember we are here to help.

If any problems happen outside of school hours, please contact our 24-hour 7 days a week Westbourne Academy Emergency number.

(0044) 79 74 34 84 53

UK Emergency services: 999

Use this number for the police, fire services and ambulance.

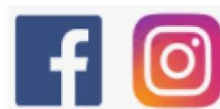
Childline: 0800 1111

This number provides a service for young people and children. If you have a serious problem, and do not feel comfortable talking to a member of Westbourne Academy staff, you can call them for help and advice

Do not forget to follow us

@westbourneacademybournemouth

For the latest information about trips, activities and much more



SEPT 25 JL

Update: SEPT 26